

# ESPS-32R1

## PCIe to dual M.2 RAID Module

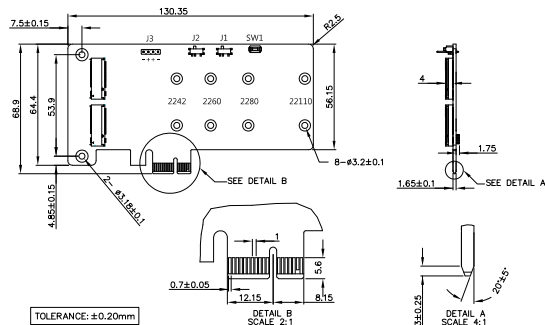


### Features

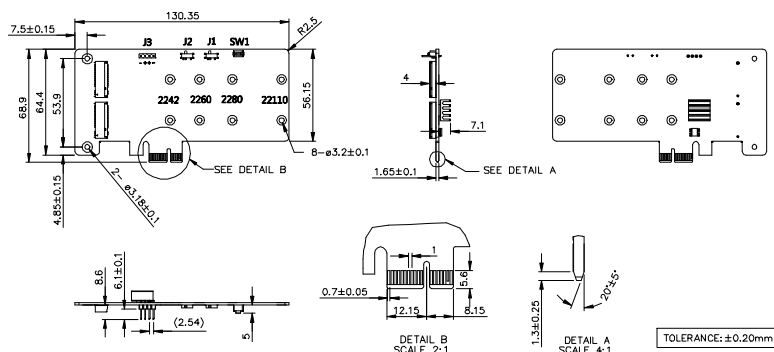
- PCIe to dual M.2 ports.
- Supports M.2 Key-B 2242/2260/2280/22110
- Low power consumption.
- Supports AHCI, Port-Multiplier.
- Supports Native Command Queuing
- Supports Hardware RAID 0, RAID1
- Supports wide temp
- 30μ golden finger, 3 years warranty.
- Industrial design, manufactured in innodisk Taiwan

### Mechanical Drawing

#### Standard Temp



#### Wide Temp



### Specifications

#### Headquarters (Taiwan)

5F., No. 237, Sec. 1, Datong Rd.,  
Xizhi Dist., New Taipei City 221,  
Taiwan  
Tel: +886-2-77033000  
Email: sales@innodisk.com

#### Branch Offices:

##### USA

[usasales@innodisk.com](mailto:usasales@innodisk.com)  
+1-510-770-9421

##### Europe

[eusales@innodisk.com](mailto:eusales@innodisk.com)  
+31-040-282-1818

##### Japan

[jpsales@innodisk.com](mailto:jpsales@innodisk.com)  
+81-45-594-7581

##### China

[sales\\_cn@innodisk.com](mailto:sales_cn@innodisk.com)  
+86-755-21673689

[www.innodisk.com](http://www.innodisk.com)

© 2014 Innodisk Corporation.  
All right reserved. Specifications  
are subject to change without  
prior notice.

October 14, 2015

### Order information

#### ESPS-32R1-C1

PCIe to dual M.2 RAID Module

#### ESPS-32R1-W1

PCIe to dual M.2 RAID Module W/T